

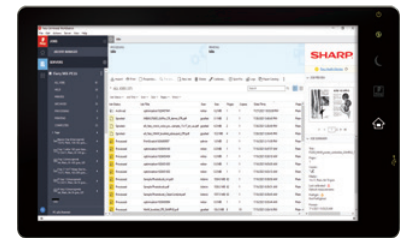
PRO SERIES MONOCHROME DOCUMENT SYSTEMS

Brilliant award-winning reliability with resourceful flexibility.

From scan-centric environments to in-plant copy rooms, the Sharp monochrome Pro Series MX-M1056 and MX-M1206 deliver advanced features that can help streamline your workflow like never before. These models are built on proven technology with award-winning reliability to handle the rigorous demands of high-volume environments. The latest EFI™ Fiery® platform allows for ultimate efficiency and operation, while providing unparalleled results.

Key Features

- **Ease of Use** – Award-winning touchscreen display offers a user-friendly graphical interface with simplified Easy Modes, intuitive job management and quick access to network services.
- **Available GBC® SmartPunch™ Plus** – Fully automated in-line punching system that dramatically streamlines workflow from printing to punching, perforating or creasing in one easy step.
- **Powerful Fiery Print Server** – Optional print server for advanced workflows and high productivity. Command WorkStation® is fully integrated with the Sharp touchscreen for unmatched control and ease-of-use.



15.4" (diagonally measured) display with fully-integrated Fieri Command WorkStation.



Up to 13,500-sheet paper capacity supports media up to 110 lb. cover stock (300 gsm).



MX-PE16 Fiery Server enables full integration of Fieri Command WorkStation at the control panel.



High capacity 300-sheet DSPF with 150-business card feeder for increased efficiency and scanning capabilities.

Designed and built for print-on-demand environments with world class features.

- **300-sheet duplexing single pass feeder (DSPF)** scans documents at up to 240 images per minute.
- **Scan Preview** feature offers on-the-fly page editing with easy fingertip navigation.
- **Triple air-feed paper handling** option offers **high reliability** and is virtually maintenance-free.
- **Print Engine Paper Catalog** stores up to 1,000 media profiles for optimal print quality.
- High-performance print controller with included **PCL® 6** and **Adobe PostScript 3**.
- **Adobe Embedded Print Engine technology**, which direct prints PDF files from a variety of sources with greater performance and rendering accuracy.
- Up to **13,500-sheet paper capacity** supports media up to **110 lb. cover stock** (300 gsm).
- True **1,200 x 1,200 dpi** printing provides beautiful images and enhanced clarity for fine details such as small text and graphics.
- Easily **access popular cloud applications**, including Microsoft® OneDrive® for Business, SharePoint® Online, Box and Google Drive™, with the Sharp Cloud Connect feature.
- Standard **Job Management** features make it easy to print on-demand as well as view jobs, retain jobs, combine jobs, select print settings and more.
- Easily **convert documents** to popular Microsoft® file formats, as well as a variety of PDF formats, with standard OCR (optical character recognition) capabilities.
- Leading-edge, multi-layered security features include **Firmware Attack Prevention** and Self Recovery, **Application Whitelisting**, and the convenient Sharp **End-of-Lease** feature, which erases all data from the device at time of trade-in.

MX-M1056/M1206 SPECIFICATIONS

Main Specifications

MX-M1056/M1206	Base models include 300-sheet DSPF, 2,000-sheet tandem paper drawer, (2) 500-sheet paper drawers, 100-sheet bypass tray, 1 TB hard disk drive, PCL [®] 6 and Adobe PostScript 3 network printing, network scanning, tilting swing out keyboard, application communication and external accounting modules.
Type	Monochrome multi-function digital document system
Display	15.4" (diagonally measured) color dot matrix high-resolution touch panel tilting display, 1,280 x 800 dots (WXGA)
Functions	Copy, print, network print, network scan and document filing ¹
Copy System	Dry electrostatic transfer/Dual component developer/Magnetic brush development/OPC/white LED exposure/heat roller fusing
Originals	Sheets and bound documents
Max. Original Size	11" x 17"
Copy Size	Minimum: 5½" x 8½", Maximum: 12" x 18"
Copy Speed	105/120 ppm (8½" x 11")
Multiple Copy	Maximum 9,999 copies
First Copy Time²	Platen Glass: 3.2 seconds, DSPF: 5.5 seconds
Warm-up Time²	213 seconds from main power switch on, 200 seconds from [Power] button on
Magnification	25% to 400% in 1% increments (with document feeder 25%-200%)
Original Feed	300-sheet/150-business card DSPF
Scan Speed	Up to 240 ipm (monochrome or color)
Original Sizes	5½" x 8½", 8½" x 11", 8½" x 11" R, 8½" x 14", 11" x 17"
Paper Capacity	Standard: 3,000 sheets, Maximum: 13,500 sheets
Paper Feed System	Standard: Tandem Tray 1 - 1,200 sheets (letter size), Tandem Tray 2 - 800 sheets (letter size), Trays 3/4 - 500 sheets ea. (letter/legal/ledger/statement/12" x 18"). Optional: Multi-bypass Tray (for machine) - 100 sheets (letter/legal/ ledger/statement/12" x 18"), Multi-bypass (for LCT) - 500 sheets (letter/legal/ledger/statement/12" x 18"), LCT (2-Drawer) - 2,500-sheets each drawer (letter/legal/ledger/12" x 18"), Letter LCC - 3,500 sheets (letter).
Paper Weights and Types	Tandem Trays - 16-28 lb. bond, Trays 3/4 - 16 lb. bond to 80 lb. cover, Multi-bypass Tray (for machine) - 15 lb. bond to 110 lb. cover, Multi-bypass Tray (for LCT) - 13 lb. bond to 80 lb. cover, LCT (2-drawer) - 15 lb. bond to 110 lb. cover, Letter LCC - 16 lb. bond to 80 lb. cover. Supported paper types include thin, plain, recycled, color, letter head, pre-printed and pre-punched and glossy.
Duplexing	Standard automatic duplex copying and printing
CPU	Up to 1.4 GHz Multiprocessor Controller
Interface	RJ-45 Ethernet (10/100/1,000 Base-T), USB 2.0 (2 host ports, front and rear), USB 2.0 (1 device port)
Memory	Standard 6 GB
Hard Disk Drive	1 TB
Copy Resolution	Scan: Up to 600 x 600 dpi; Output: Up to 1,200 x 1,200 dpi
Copy Modes	Monochrome/Grayscale
Exposure Control	Modes: Text, Text/Printed-Photo, Printed-Photo, Text Photo, Photo, Map, Pale-Color. Settings: Auto or 9 step manual
Halftone	256 gradations/2 levels (monochrome)
Copy Features	Electronic sort, Auto Paper Selection (APS), Auto Magnification Selection (AMS), image preview/edit, auto tray, paper type selection switching, rotate copy, reserve copy, tandem copy, book copy, margin shift, edge/center erase, book divide, dual page, cover/insert page, OHP insert, job build, card shot, blank page skip, mirror/B/W reverse, proof, pamphlet, watermark, custom image, job programs.
Account Control	Up to 1,000 users. Supports user-number authentication via local, LDAP and Active Directory for copy, print, scan and document management.
Firmware Management	Flash ROM with local (USB), network update capability and firmware update 1 to N with SRDM (Sharp Remote Device Manager)
Device Setup	Web-based management with user/administrator level login
Service/Functions	Remote front panel, remote access to service logs and click counts
Accessibility	Free stop tilting front panel, adjustment of key touch sound and speed, concave key, document feeder free stop, job programs, remote front panel, universal grip for paper trays, and disable screen timeout
Environmental Standards	International Energy Star Program Ver. 3.0, European RoHS
Power Source	208-240V AC, 60 Hz, 20 A Receptacle
Power Consumption	Maximum: 3.55 kW or less
Weight	Approx. 611 lbs.
Dimensions	Approx. 45" (w) x 30½" (d) x 60¼" (h)

Network Printing System (Standard)

PDL	Standard PCL 6, Adobe PostScript 3
Resolution	1,200 x 1,200 dpi
Print Speed	105/120 pages per minute (8½" x 11")
Print Drivers	Windows 8.1, Windows 10, Windows Server [®] 2012, Windows Server 2016, Windows Server 2019, Windows PPD, Mac [®] OS X/ [®] macOS [®] (including 10.9 to 11), all Mac PPD, Linux [®] PPD
Features	Auto configuration, continuous printing, electronic sorting, N-up printing, duplex printing, transparency inserts, margin shift, image rotation, different cover page, poster print, job bypass print, job retention, confidential print, proof print, user authentication, image stamp and watermarks. Additional features: Multiple pamphlet print, network tandem print, carbon copy print mode, different cover page/last page/other page, form overlay, tab paper settings, tab printing, chapter inserts and page interleave ¹
Direct Printing	File Types: TIFF, JPEG, PCL, PRN, TXT, PDF, Encrypted PDF, Compact PDF/A, PostScript, DOCX, XLSX, PPTX, and PNG. Methods: FTP, SMB, Web page, Email and USB memory. Adobe Embedded Print Engine support for PDF file formats.
Resident Fonts	80 outline fonts (PCL), 139 fonts (PS)
Interface	RJ-45 Ethernet 10/100/1,000 Base-T, USB 2.0
Operating Systems and Environments	Windows 8.1, Windows 10, Windows Server 2012, Windows Server 2016, Windows Server 2019, Chrome [®] , Mac OS X/macOS 10.9-11, Unix [®] , Linux, Citrix [®] , SAP device types
Network Protocols	TCP/IP (IPv4, IPv6, IPsec), HTTP/HTTPS, IPP/IPP-SSL, FTP/FTPS, SNMPv3, SMTP/SMTP-SSL, POP3/POP3-SSL, LDAP/LDAP-SSL, 802.1x for Windows and Unix
Printing Protocols	LPR, IPP, IPPS, Raw TCP (port 9100), FTP, POP3 and HTTP
Network and Data Security	Includes IP/MAC address filtering, protocol filtering, port control, user authentication (local/LDAP/Active Directory), TLS Encryption, Kerberos support, data encryption, End-of-Lease, data overwrite (up to 10x), DoD 5220.22-M

Network Scanning System (Standard)

Scan Modes	Standard: Color, monochrome, grayscale
Max. Original Size	11" x 17"
Optical Resolution	600 dpi
Output Modes	600 dpi, 400 dpi, 300 dpi, 200 dpi, 150 dpi, 100 dpi
Image Formats¹	Monochrome: TIFF, PDF, PDF/A-1b, PDF/A-1a, Encrypted PDF, Searchable PDF, XPS, PPTX, XLSX, DOCX, TXT, RTF. Color/Grayscale: TIFF, JPEG, PDF, PDF/A-1b, PDF/A-1a, Encrypted PDF, Compact PDF, Searchable PDF, XPS, PPTX, XLSX, DOCX, TXT, RTF.
Image Compression	Monochrome Scanning: Uncompressed, G3 (MH), G4 (MR/MMR)
Scan Destinations	Compression Color/Grayscale: JPEG (high, middle, low)
One-touch Destinations	Email, Desktop, FTP, Folder (SMB), USB
Group Destinations	Up to 500
Programs	48 (combined)
Max. Jobs	Up to 100
Network Protocols	TCP/IP and TLS (includes HTTP, SMTP, LDAP, FTP, POP3), SMB, ESMP and 802.1x
Sharp OSA Platform	Application Communication Module (MX-AMX2L) and External Accounting Module (MX-AMX3L) standard

MX-PE16 Fiery Server

Server	Type External Server
System Software	Fiery FS400 Pro
CPU Type	Intel [®] Pentium [®] Processor G5400
CPU Speed	3.7 GHz
Memory	8 GB RAM
Hard Disk Drive	500 GB
Operating System	Windows [®] Embedded 10 Pro
Network	RJ45 10/100/1000 Base-T
Connectivity	
Power Source	100-240V AC, 50/60 Hz, 3A
Power Consumption	Typical: 75W, Maximum: 180W
Weight	Approx. 15 lbs.
Dimensions	Approx. 20" (w) x 13½" (d) x 14" (h)

4K 100-Sheet Stapler/Finisher (MX-FN21: option)

Type	4,000-sheet console stapler finisher (100-sheet stapling)
Output Trays	Upper tray: Moving offset tray (up to 1,500 letter size sheets) Middle tray: 250 sheets (letter size, non-stapled) Lower tray: Moving offset tray (up to 2,500 letter size sheets)
Stapling Capacity	Up to 100 sheets (letter/statement)
Stapling Media	Plain paper, letter/legal/ledger size or mixed
Stapling Positions	1 front, 1 rear, or 2 point stitching
Hole Punching	Optional three-hole punch unit MX-PN13B
Power Source	120V AC, 60 Hz, 15 Amps
Power Consumption	200W/350W with MX-FD10
Weight	Approx.: 134.5 lbs.
Dimensions	Approx.: 35¼" (w) x 30" (d) x 41" (h) (with tray extended)

4K 100-Sheet Stapler/Saddle Stitch Finisher (MX-FN22: option)

Type	4,000-sheet console stapler finisher (100-sheet stapling)
Output Trays	Upper tray: Moving offset tray (up to 1,500 letter size sheets) Middle tray: 250 sheets (letter size, non-stapled) Lower tray: Moving offset tray (up to 2,500 letter size sheets)
Stapling Capacity	Up to 100 sheets (letter/statement)
Stapling Media	Plain paper, letter/legal/ledger size or mixed
Stapling Positions	1 front, 1 rear, or 2 point stitching
Saddle Stitch	Center stitch/center fold (2 staples) letter/legal/ledger paper sizes;
Maximum Sets	up to 5 sets (16-20 sheets per set)/10 sets (11-15 sheets per set)/15 sets (6-10 sheets per set)/25 sets (1-5 sheet(s) per set)
Hole Punching	Optional three-hole punch unit MX-PN13B
Power Source	120V AC, 60 Hz, 15 Amps
Power Consumption	200W/350W with MX-FD10
Weight	Approx. 134.5 lbs.
Dimensions	Approx. 35¼" (w) x 30" (d) x 41" (h) (with tray extended)

Optional Equipment

MX-CF11	2-tray Post Sheet Inserter Unit ¹
MX-FD10	Multi-folding Unit ¹
MX-LC12	3,500-sheet Large Capacity Cassette (letter) ¹
MX-LC13N	5,000-sheet Large Capacity 2-Drawer Air-Feed Tray (ledger) ¹
MX-MFX1	100-sheet Multi-bypass Tray (for machine)
MX-MF11	500-sheet Multi-bypass Tray (for MX-LC13N)
MX-FN21	4K Stacking 100-Sheet Staple Finisher ¹
MX-FN22	4K Stacking 100-Sheet Staple/Saddle Stitch Finisher ¹
MX-RB13	Relay Unit
MX-RB16	Large Capacity Tray Mounting Kit
MX-RB17	Large Capacity Tray Tandem Connection Kit
MX-RB18	Curly Correction Unit ¹
MX-TM10	Trimmer Unit ¹
MX-PN13B	3-Hole Punch Unit (for MX-FN21/FN22)
MX-SCX1	Staple Cartridge (for MX-FN22)
MX-SCX2	Staple Cartridge (for MX-FN21/FN22)
MX-SL10N	Status Indicator
AR-SU1	Stamp Unit (requires AR-SV1 Stamp Cartridge)
AR-SV1	48 Stamp Cartridge (required for AR-SU1)
MX-PF10	Bar Code Font Kit
MX-PE16	Fiery Print Server
MX-PX16	Fiery Interface Kit
MX-FR66U	Data Security Kit

Supplies

MX-900NT	Toner Cartridge
MX-900NV	Developer
MX-850NR	Drum
MX-850HB	Toner Collection Container

¹ Some features require optional equipment. See your local dealer.

² Specification may vary depending on product configuration, machine settings and operating conditions.



Qualcomm[®] DirectOffice[™]



SHARP

SHARP ELECTRONICS CORPORATION
100 Paragon Drive, Montvale, NJ 07645
1-800-BE-SHARP • www.sharppusa.com

Sharp, Sharp OSA, Sharpdesk, My Sharp, and all related trademarks are trademarks or registered trademarks of Sharp Corporation and/or its affiliated companies. Windows and Windows Server are trademarks or registered trademarks of Microsoft Corporation. Adobe and PostScript are either registered trademarks or trademarks of Adobe in the US and/or other countries. EFI, Fiery, Electronics For Imaging, the Fiery logo, the EFI logo, FreeForm, Spot-On, WebTools and Command WorkStation are trademarks or registered trademarks of Electronics For Imaging, Inc. All other trademarks are the property of their respective owner. Design and specifications subject to change without notice.